



House & Land Package

Eclipse 23

Lot 28 - Forest Ridge
Strathfieldsaye

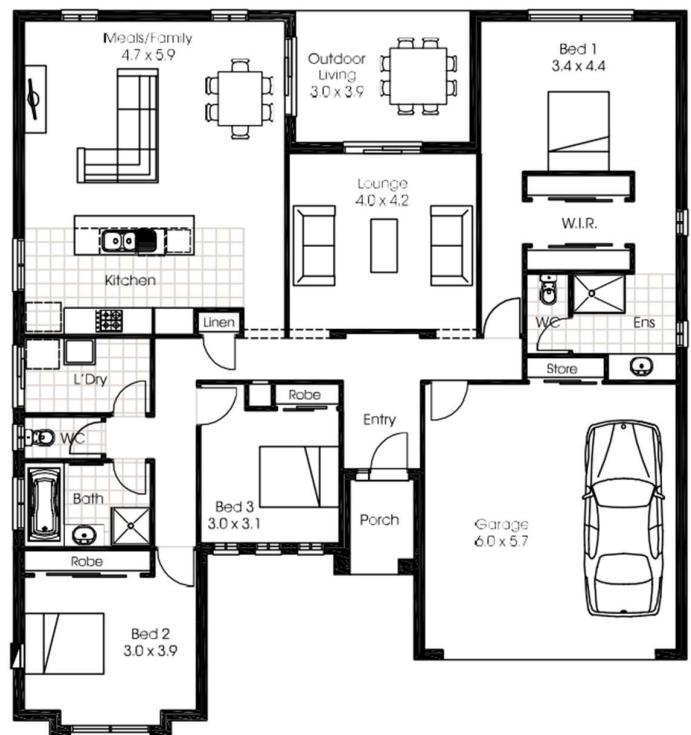


Lot Size: 596m²

\$ 784,326.00

List of Inclusions:

- Site Cost Allowance Including BAL 12.5
- Colorbond Steel Roofing + Upgraded Facade
- Higher than Standard Ceilings
- Quality Flooring Throughout
- Ducted Reverse Cycle Heat Pump Air Conditioner
- 900mm Induction Cooktop & Built In Oven
- Westinghouse Dishwasher
- 20mm Stone Benchtop to Kitchen
- Double Glazing to All Windows & External Doors
- Natural Concrete to Porch, Driveway & Alfresco
- Heat Pump Hot Water Service
- 7 Star Energy Rating & Livable Housing Design



cavalier
homes[®]
REAL HOMES... REAL PEOPLE.

Find Out More

Contact: Lisa Nankervis
0448 177 483

All prices, images, inclusions and plans shown in this document and any Display Home vary throughout Australia and over time and are provided as a guide only. Unless otherwise stated in writing, new home prices do not include furniture, decorator items, driveways, paths, landscaping, swimming pools, letterboxes, fencing, security systems, vacuum systems, telephone, intercom and communication systems, air conditioning, heating systems and or connection fees. All Cavalier Homes designs are copyright. None of the information provided in this brochure forms part of any contract with Cavalier Homes and you should not rely upon any information contained in this brochure in deciding whether to enter into any contract with Cavalier Homes. Please refer to the particulars of your Contract for the specific design and details of any inclusions.